

Safety assessments and Safety investigations

How to integrate Safety Management
System processes in 2017/373
Enviroment

Main issues....



Who?

Where?

And How?

WHO?



Safety Assessors can contribute to Safety Investigation Processes?



Safety Investigators can contribute to Safety Assessment Processes?



Wich kind of expertise these Safety Actors need to deal with New Regulation requirements?

Where?

AS IS



At Safety department...
Methodology
Procedures
Monitoring activities



At ATS Unit Level...
Investigations and Safety Assessments

...TO BE???

Do we need something different?

Where?

Alternative Solutions



Methodology
Procedures
Monitoring activities
Investigations and
Safety Assessments



Safety data feeder

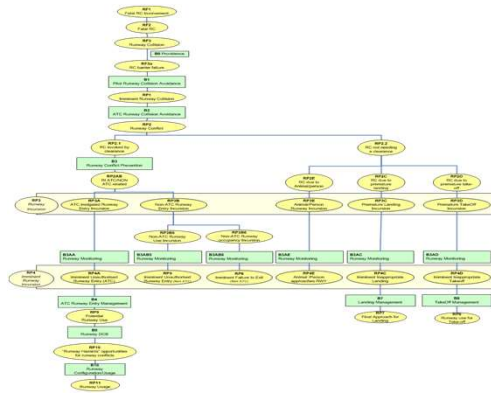


And.....How?



How can we link investigations and
safety assessments?

The IRiS model



What about data gathering and analysis of occurrences? At central or local level? Made by?

Precursors as monitoring criteria is the right way forward?
Are they specific for any change?

Possible solutions?

