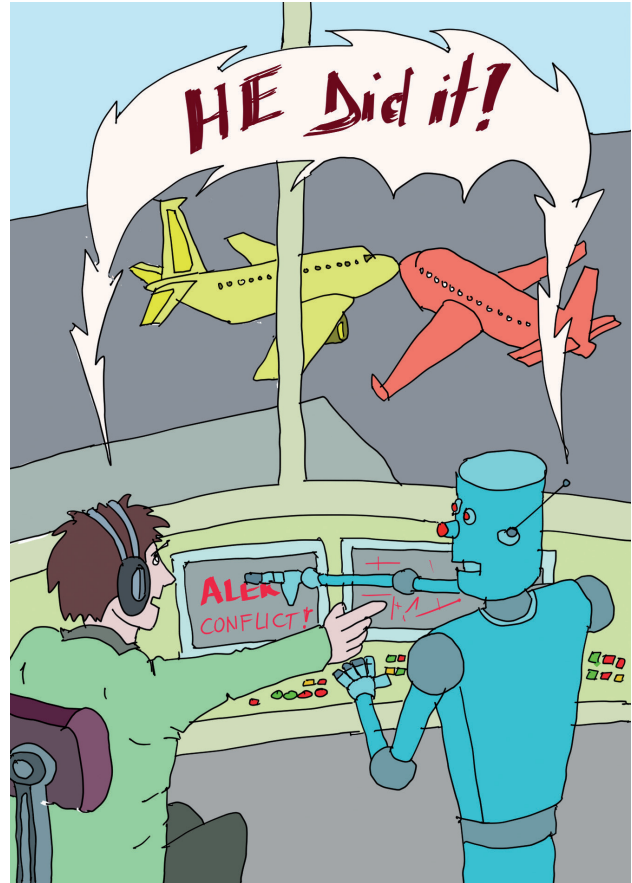
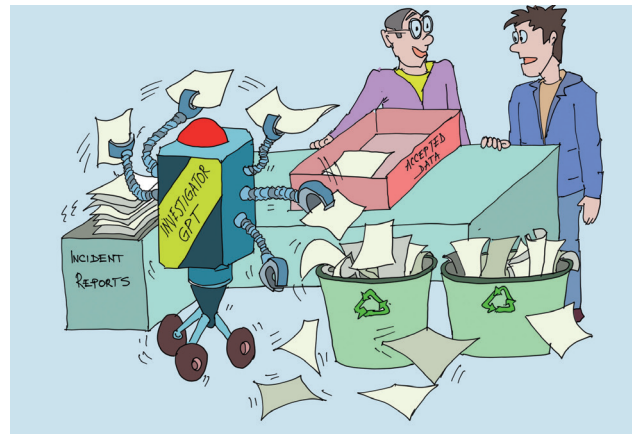




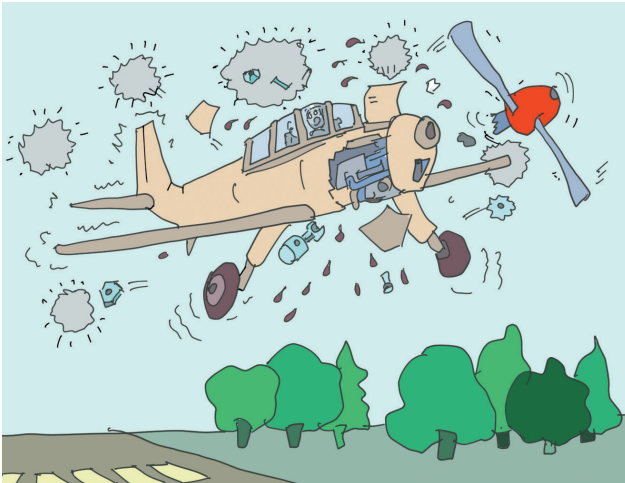
Now that AI directly analyses the incident reports, feedback is lightning fast



The retrospective session on the last outage didn't go as planned



"Is natural language processing difficult?"
"Not at all! The AI keeps only the data that fit our model!"



"It looks like we have another case of pilot error on our hands"



"Still think this was the best way to understand what it's like at the 'sharp end'?"



"I can accept that hitting the reef was an honest mistake, but forgetting the can opener..."

